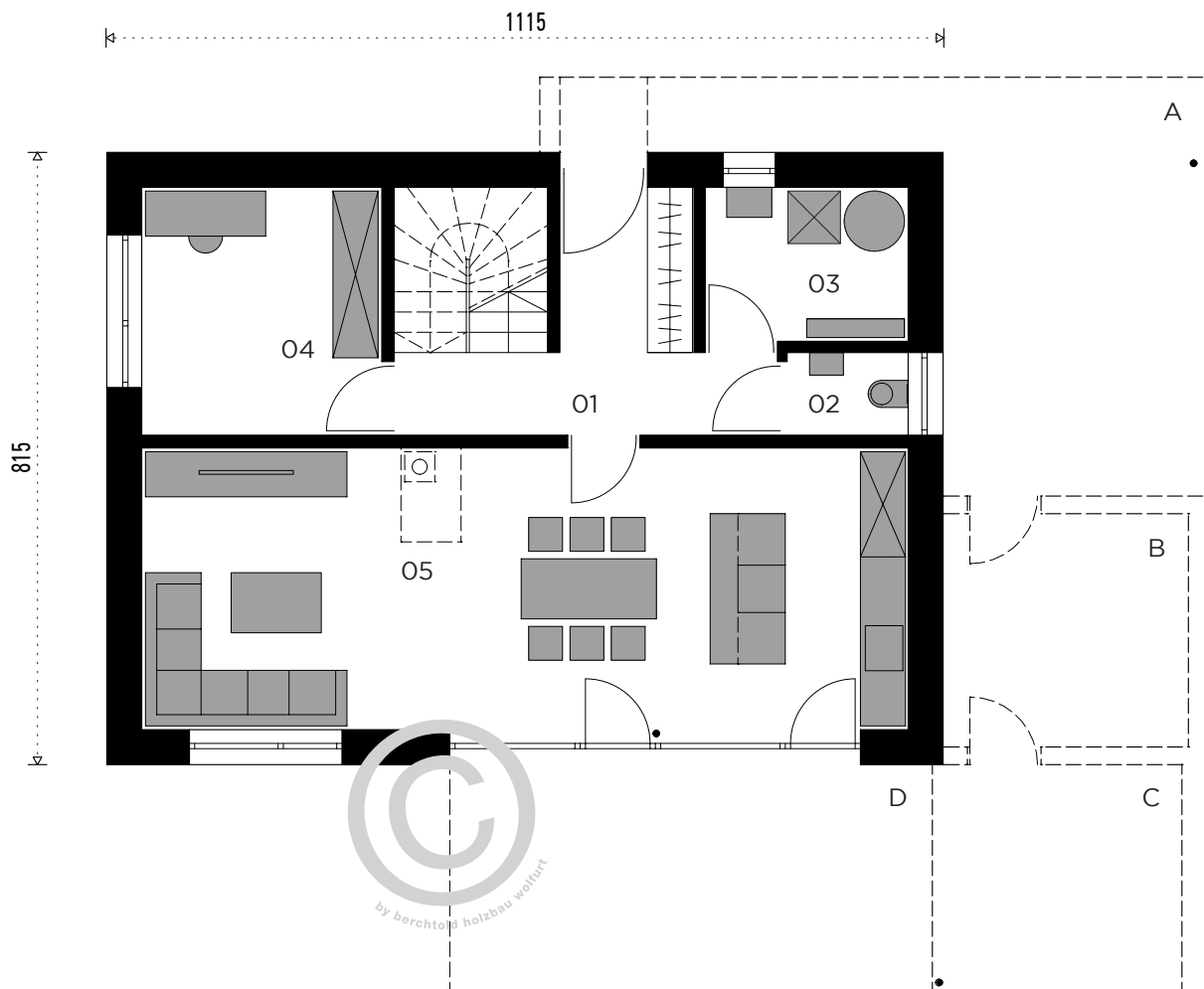


- 01 GANG 9,60m²
- 02 WC 1,80m²
- 03 TECHNIK 5,40m²
- 04 BÜRO 10,40m²
- 05 KOCHEN | ESSEN | WOHNEN 38,30m²

EG inkl. Technik 65,50m²

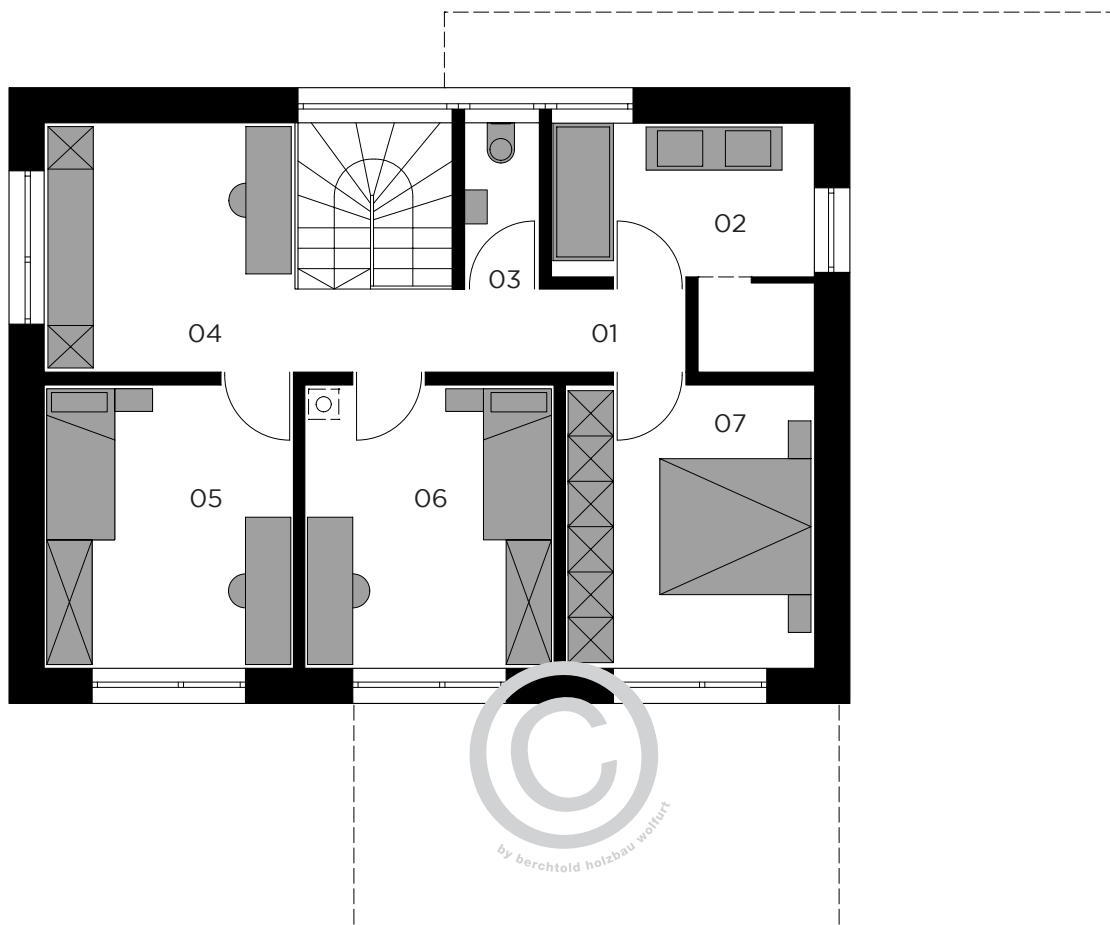
- A CARPORT - optional
- B SCHOPF - optional
- C SITZPLATZ - optional
- D TERRASSE - optional

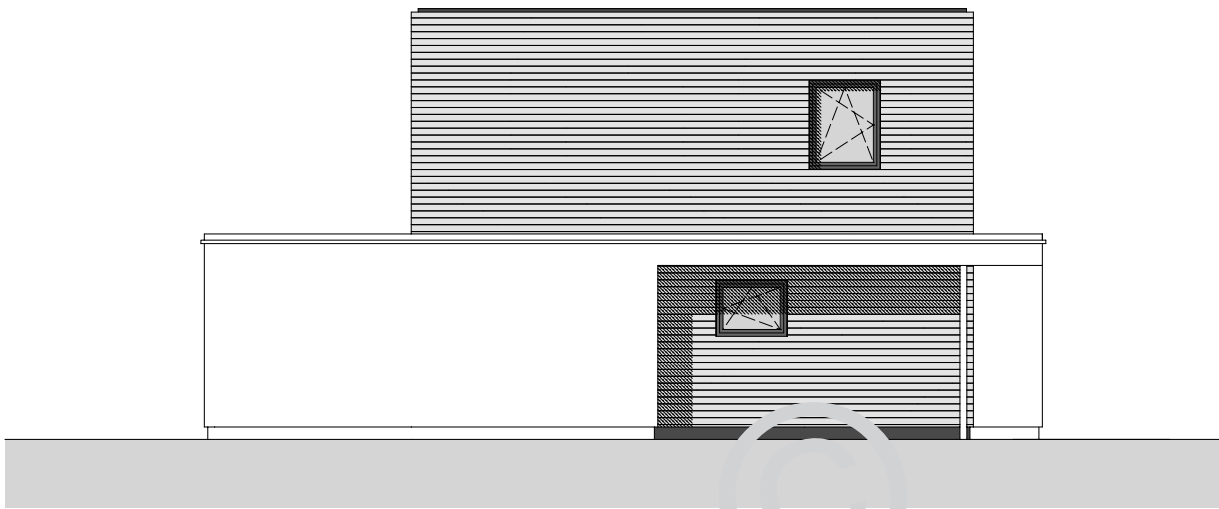
SUMME EG + OG 130m²



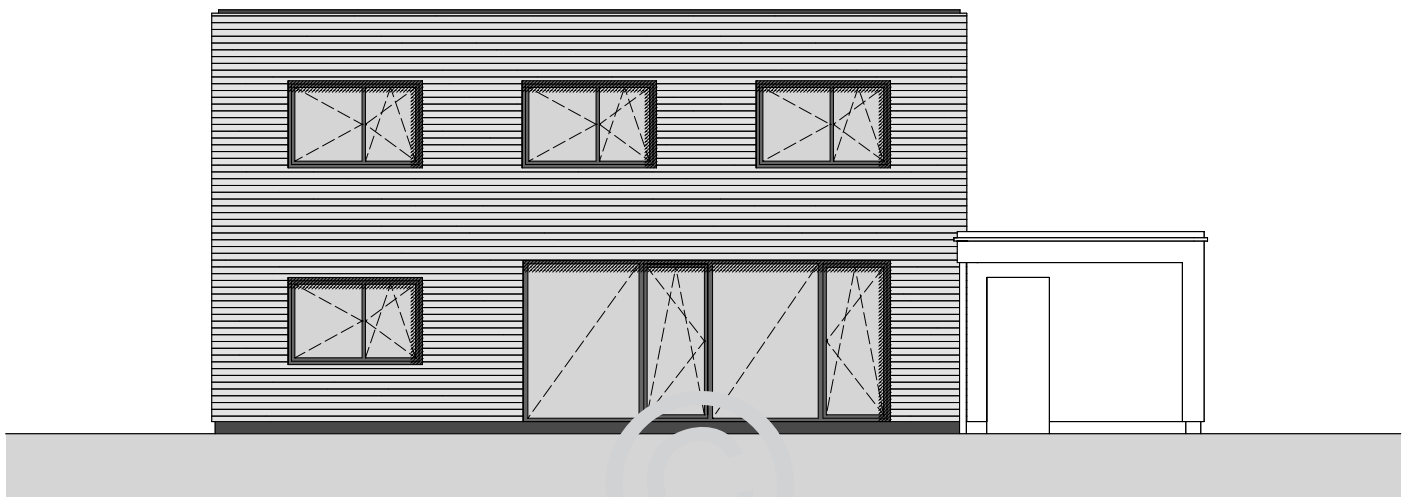
- 01 GANG 5,60m²
- 02 BAD 9,00m²
- 03 WC 2,00m²
- 04 BÜRO 11,00m²
- 05 KIND 12,30m²
- 06 KIND 12,30m²
- 07 ELTERN 12,30m²

OG 64,50m²

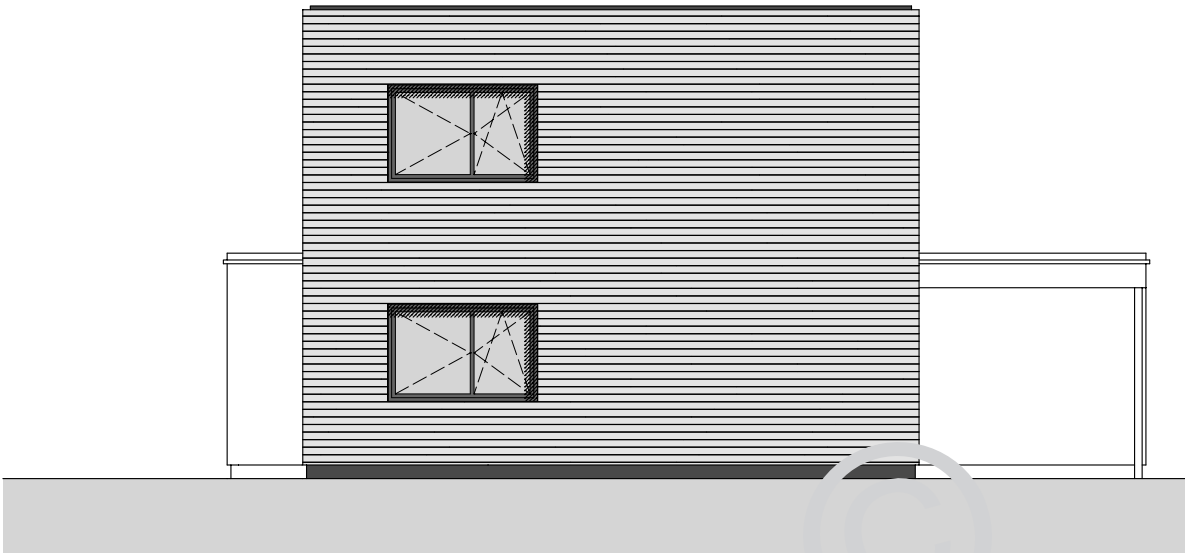




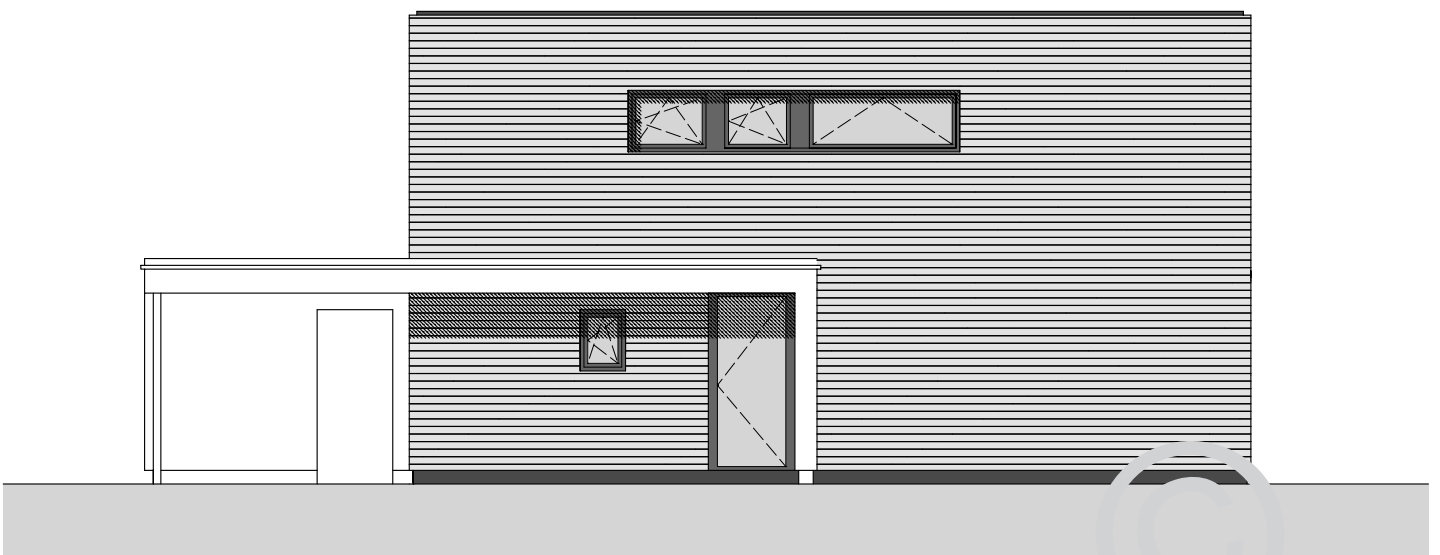
ANSICHT OST 1_100



ANSICHT SÜD 1_100

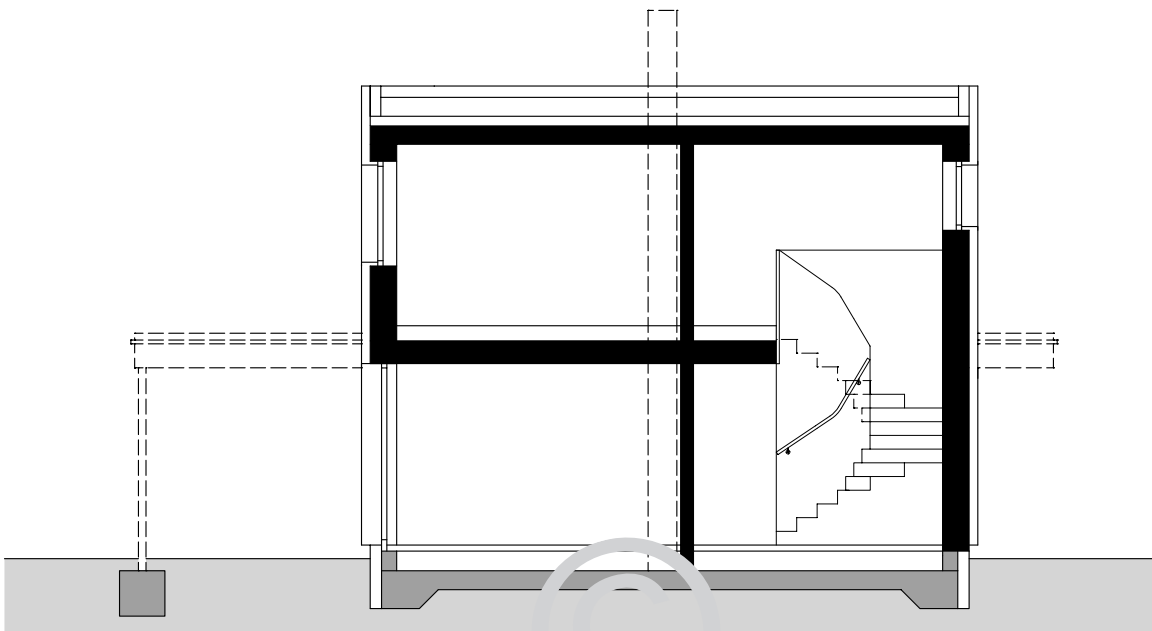


ANSICHT WEST 1_100

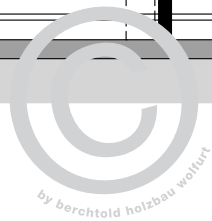


ANSICHT NORD 1_100





QUERSCHNITT 1_100



Haus | Treppe | Möbel

Berchtold Holzbau GmbH & Co KG
A-6922 Wolfurt | Riedweg 20
T +43 (0)5574 75732